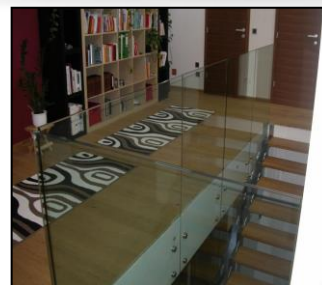
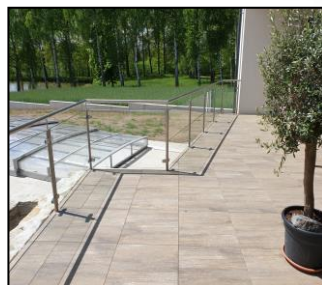
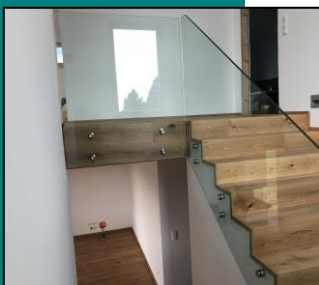


Punkthalter/ Point fixtures	100
Klemmhalter/ Glass clamps	105

5

GLASVERBINDER GLASS CONNECTORS

steelbase



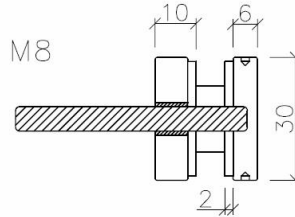
Punkthalter/ Point fixtures



PF 030

V2A V4A

Glasbohrng./ Glasshole:
 $\varnothing = 20 \text{ mm}$



PF30-D20 A = 20 mm

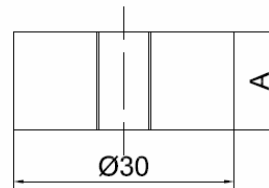
PF30-D30 A = 30 mm

PF30-D40 A = 40 mm

PF30-D50 A = 50 mm

V2A

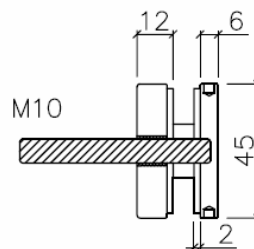
Distanzen



PF 045

V2A V4A

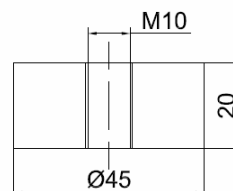
Glasbohrng./ Glasshole:
 $\varnothing = 22 \text{ mm}$



PF45-D20

V2A V4A

Distanzen

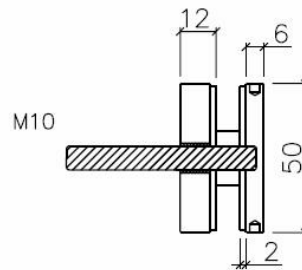




PF 050

V2A V4A

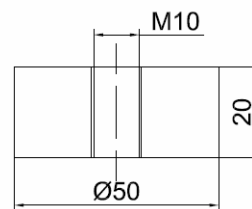
Glasbohrg. / Glasshole:
 $\varnothing = 22 \text{ mm}$



PF50-D20

V2A V4A

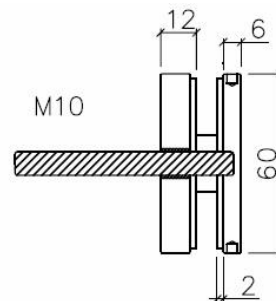
Distanzen



PF 060

V2A
 V4A

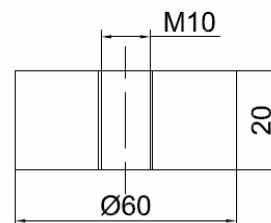
Glasbohrg. / Glasshole:
 $\varnothing = 22 \text{ mm}$



PF60-D20

V2A V4A

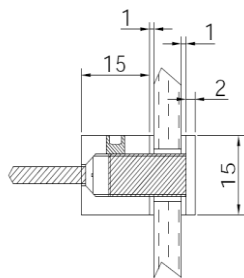
Distanzen





PF 015

V2A



Sicherungsschraube/ Safety screw

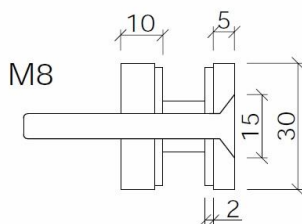
Glasbohrng./ Glasshole:
Ø = 10 mm



PF 030-2

V2A

V4A



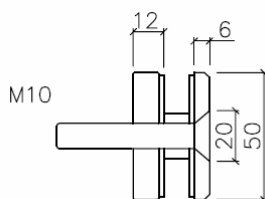
Glasbohrng./ Glasshole:
Ø = 20 mm



PF 050-2

V2A

V4A



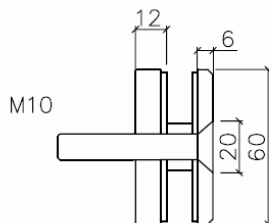
Glasbohrng./ Glasshole:
Ø = 22 mm



PF 060-2

V2A

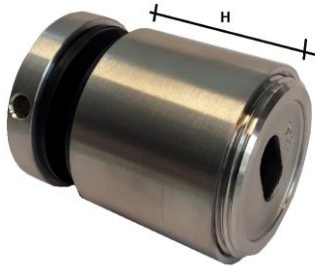
V4A



Glasbohrng./ Glasshole:
Ø = 22 mm



einstellbare
Distanz



PF V50-H30

V4A

Ø 50 mm
H = 30 mm
M10*45 mm

Glasbohrng./ Glasshole:
Ø = 28 mm
für 8 - 17,52 mm Glas
for 8 - 17,52 mm glass

PF V50-H40

V4A

Ø 50 mm
H = 40 mm
M10*50 mm

Glasbohrng./ Glasshole:
Ø = 28 mm
für 8 - 21,52 mm Glas
for 8 - 21,52 mm glass



PF V50-H50

V4A

Ø 50 mm
H = 50 mm
M10*50 mm

Glasbohrng./ Glasshole:
Ø = 28 mm
für 8 - 21,52 mm Glas/
for 8 - 21,52 mm glass

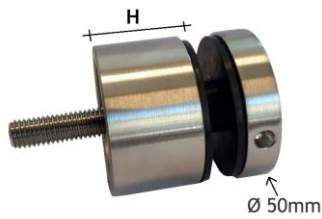


PF_TO

Schlüssel für
- PF V50-H30
- PF V50-H40
- PF V50-H50
- PF A50-H30
- PF A50-H40
- PF A50-H50

Verstellbar von
20 bis 50 mm





PF A50-H30

V4A

Ø 50 mm
H = 30 mm
M10*80 mm

Glasbohrng./ Glasshole:
Ø = 22 mm
für 8 - 17,52 mm Glas
for 8 - 17,52 mm glass



PF A50-H40

V4A

Ø 50 mm
H = 40 mm
M10*80 mm

Glasbohrng./ Glasshole:
Ø = 22 mm
für 8 - 17,52 mm Glas
for 8 - 17,52 mm glass



PF A50-H50

V4A

Ø 50 mm
H = 50 mm
M10*90 mm

Glasbohrng./ Glasshole:
Ø = 22 mm
für 8 - 17,52 mm Glas/
for 8 - 17,52 mm glass



PF_TO

Schlüssel für
- PF A50-H30
- PF A50-H40
- PF A50-H50
- PF V50-H30
- PF V50-H40
- PF V50-H50

Verstellbar von
20 bis 50 mm

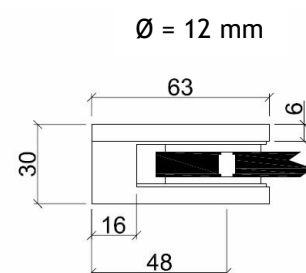
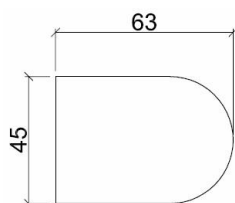
Klemmhalter/ Glass clamps

GC R63F

V2A V4A



- 8 mm
- 8,76 mm
- 10 mm
- 10,76 mm
- 12 mm
- 12,76 mm



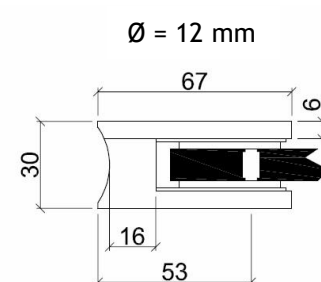
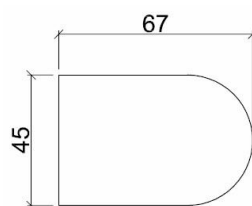
Inkl.
Sicherungsstift/
Incl. security pin

GC R63R

V2A V4A



- 8 mm
- 8,76 mm
- 10 mm
- 10,76 mm
- 12 mm
- 12,76 mm



Inkl.
Sicherungsstift/
Incl. security pin

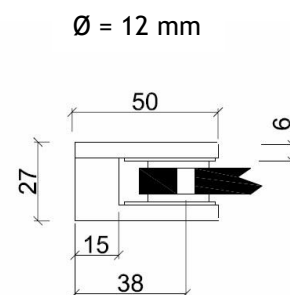
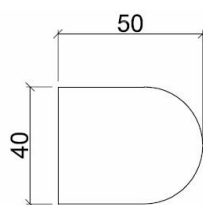
für 42,4 mm Rohr/
for 42,4 mm pipe

GC R50F

V4A



- 6 mm
- 8 mm
- 8,76 mm
- 10 mm
- 10,76 mm



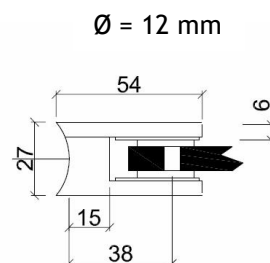
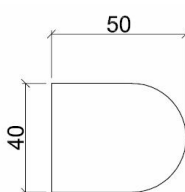
Inkl. Sicherungsstift/
Incl. security pin

GC R50R

V4A



- 6 mm
- 8 mm
- 8,76 mm
- 10 mm
- 10,76 mm



Inkl. Sicherungsstift/
Incl. security pin

für 42,4 mm Rohr/
for 42,4 mm pipe



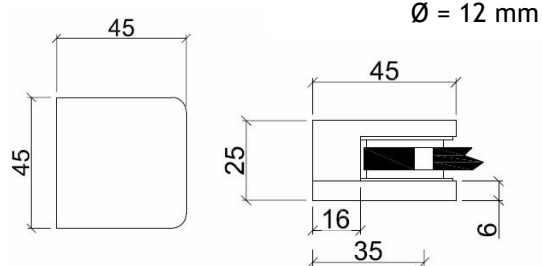
GC S45F (ohne Sicherungsplatte)

V2A V4A



- 6 mm
- 8 mm
- 8,76 mm
- 10 mm
- 10,76 mm

Inkl. Sicherungsstift/
Incl. security pin



GC S45R (ohne Sicherungsplatte)

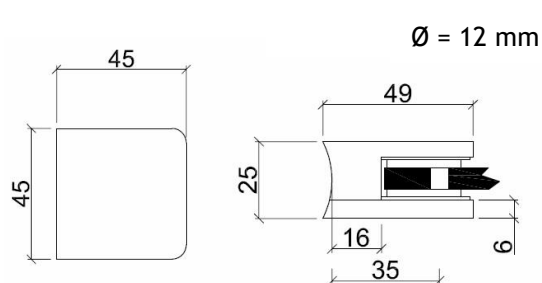
V2A V4A



- 6 mm
- 8 mm
- 8,76 mm
- 10 mm
- 10,76 mm

Inkl. Sicherungsstift/
Incl. security pin

für 42,4 mm Rohr/
for 42,4 mm pipe



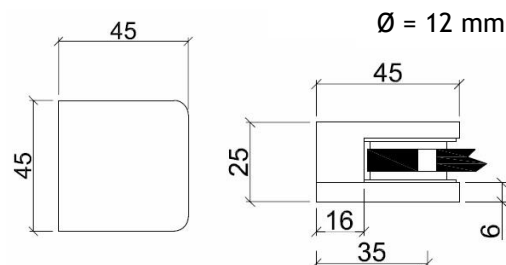
GC S45F_P (mit Sicherungsplatte)

V4A



- 8,76 mm
- 10 mm
- 10,76 mm

Inkl. Sicherungsstift/
Incl. security pin



GC S45R_P (mit Sicherungsplatte)

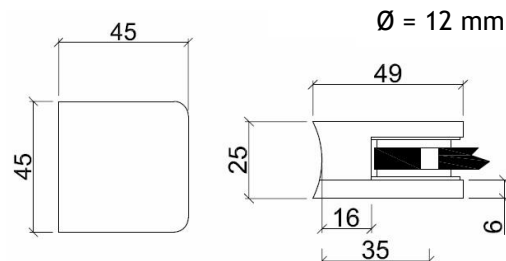
V4A



- 8,76 mm
- 10 mm
- 10,76 mm

Inkl. Sicherungsstift/
Incl. security pin

für 42,4 mm Rohr/
for 42,4 mm pipe



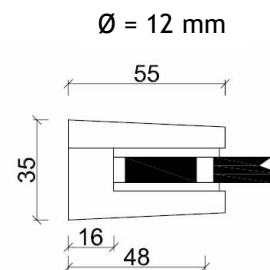
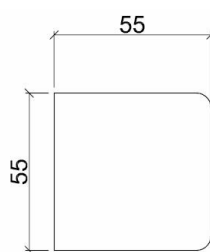
GC S55F (ohne Sicherungsplatte)

V2A V4A



- 10 mm
- 10,76 mm
- 12 mm
- 12,76 mm

Inkl. Sicherungstift/
Incl. security pin



GC S55R (ohne Sicherungsplatte)

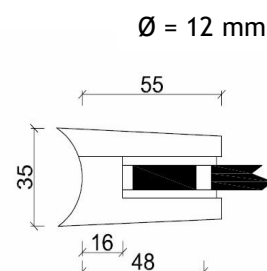
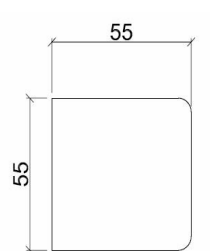
V2A V4A



- 10 mm
- 10,76 mm
- 12 mm
- 12,76 mm

Inkl. Sicherungstift/
Incl. security pin

für 42,4 mm Rohr/
for 42,4 mm pipe



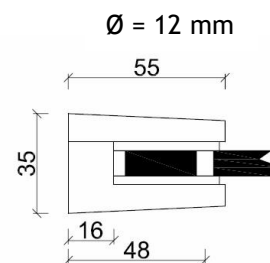
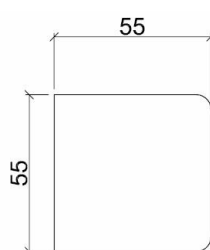
GC S55F_P (mit Sicherungsplatte)

V2A V4A



- 10 mm
- 10,76 mm
- 12 mm
- 12,76 mm

Inkl. Sicherungstift/
Incl. security pin



GC S55R_P (mit Sicherungsplatte)

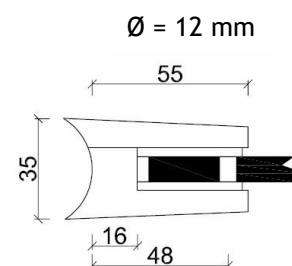
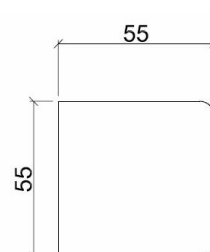
V2A V4A



- 10 mm
- 10,76 mm
- 12 mm
- 12,76 mm

Inkl. Sicherungstift/
Incl. security pin

für 42,4 mm Rohr/
for 42,4 mm pipe



5

